



Better Plants. Better Advice. Better Results.



Steak Sandwich Tomato

Solanum lycopersicum 'Steak Sandwich'

Height: 3 feet

Spread: 18 inches

Spacing: 18 inches

Sunlight: ☉

Hardiness Zone: (annual)

Group/Class: Slicer-Indeterminate

Description:

Early maturing and high yielding, this vigorous compact variety is perfect for gardens and containers; large, firm and luscious slicing tomatoes are produced throughout the season; rich, old fashioned tomato flavor, great for sandwiches, BLTs and burgers

Edible Qualities

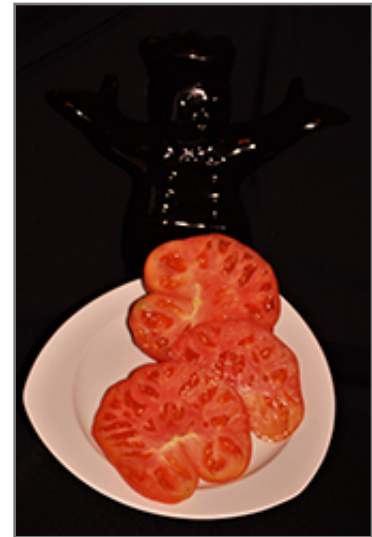
Steak Sandwich Tomato is an annual vegetable plant that is commonly grown for its edible qualities. It produces large red round tomatoes (which are technically 'berries') with red flesh which are usually ready for picking from mid summer to early fall. This is an indeterminate variety, which means it produces fruit throughout the growing season. The tomatoes have a delicious taste and a juicy texture.

The tomatoes are most often used in the following ways:

- Fresh Eating
- Eating When Cooked/Prepared
- Cooking
- Canning
- Sauces

Planting & Growing

Steak Sandwich Tomato will grow to be about 3 feet tall at maturity, with a spread of 18 inches. When planted in rows, individual plants should be spaced approximately 18 inches apart. Because of its vigorous growth habit, it may require staking or supplemental support. This fast-growing vegetable plant is an annual, which means that it will grow for one season in your garden and then die after producing a crop.



Steak Sandwich Tomato fruit and flesh

Photo courtesy of NetPS Plant Finder



Better Plants. Better Advice. Better Results.

This plant can be difficult to integrate into a landscape or flower garden, and is best grown in a designated vegetable garden. It should only be grown in full sunlight. It does best in average to evenly moist conditions, but will not tolerate standing water. It may require supplemental watering during periods of drought or extended heat. This plant is a heavy feeder that requires frequent fertilizing throughout the growing season to perform at its best. It is not particular as to soil pH, but grows best in rich soils. It is somewhat tolerant of urban pollution. Consider applying a thick mulch around the root zone over the growing season to conserve soil moisture. This is a selected variety of a species not originally from North America.

Steak Sandwich Tomato is a good choice for the vegetable garden, but it is also well-suited for use in outdoor pots and containers. With its upright habit of growth, it is best suited for use as a 'thriller' in the 'spiller-thriller-filler' container combination; plant it near the center of the pot, surrounded by smaller plants and those that spill over the edges. It is even sizeable enough that it can be grown alone in a suitable container. Note that when growing plants in outdoor containers and baskets, they may require more frequent waterings than they would in the yard or garden.

Moana Lane Garden Center & Corporate Office
1100 W. Moana Lane
Reno, NV 89509
(775) 825-0600
(775) 825-0602 - Corporate Office

South Virginia St. Garden Center
11301 S. Virginia Street
Reno, NV 89511
(775) 853-1319

Pyramid Way Garden Center
3397 Pyramid Way
Sparks, NV 89431
(775) 425-4300

Landscape Services & Design Center
1190 W. Moana Lane
Reno, NV 89509
(775) 825-0602 ext. 134
NV Lic. #3379A, D & CA Lic. #317448

www.moananursery.com